

A CASE-CONTROL STUDY OF EPIDEMIOLOGICAL IMPORTANCE RISK OF FAMILY HISTORY OF PSORIASISAnca Chiriac¹, Caius Solovan², Anca E Chiriac³, Liliana Foia⁴, Piotr Brzezinski⁵¹*Dermato-Physiology Department, Apollonia University Iasi, Strada Muzicii nr 2, Iasi-700399, Romania*²*Department of Dermatology, University of Medicine V Babes, Timisoara, Romania*³*Medical student, University of Medicine and Pharmacy "Gr. T. Popa" Iasi, Romania*⁴*Department of Biochemistry, University of Medicine and Pharmacy "Gr. T. Popa" Iasi, Romania.*⁵*Department of Dermatology, 6th Military Support Unit, os. Lendowo 1N, 76270 Ustka, Poland***Source of Support:**

Nil

Competing Interests:

None

Corresponding author: Ass. Prof. Anca Chiracancachiriac@yahoo.com

Our Dermatol Online. 2014; 5(1): 90-91

Date of submission: 14.09.2013 / acceptance: 28.10.2013

Cite this article:*Anca Chiriac, Caius Solovan, Anca E Chiriac, Liliana Foia, Piotr Brzezinski. A case-control study of epidemiological importance risk of family history of psoriasis. Our Dermatol Online. 2014; 5(1):90-91.*

Sir

We have conducted a case-control study to analyze the epidemiological importance risk of family history of psoriasis. The retrospective study was done on 1236 patients diagnosed with psoriasis on clinical and histopathological grounds,

between 2004-2011, in an Out-patient Clinic in North-Eastern part of Romania. The sex ratio of psoriasis was 1.18:1 (male patients 54.13%, female patients 45.87%), median age at the diagnosis was 29.34±15.24SD; family history of psoriasis (by declaration) was 29.53% (Tabl. I).

Family history	Nr. cases	%
Absent	871	70.47%
Present	365	29.53%
First degree	200	16.18%
Children	16	1.29%
Parents	184	14.89%
Second degree	115	9.30%
Grand parents	36	2.91%
Grand children	9	0.73%
Brothers/sisters	70	5.66%
Third degree	36	2.91%
Grand-grand parents	3	0.24%
Uncle/aunt	33	2.67%
Fourth degree	14	1.13%
Cousins	14	1.13%
Total	1236	

Table I. Results of the study.

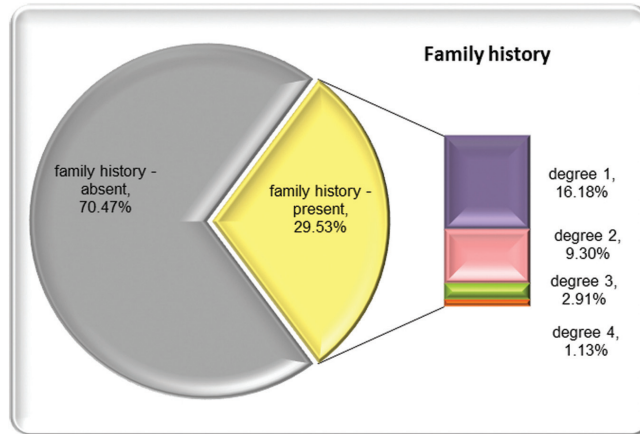


Figure 1. Graphic of the distribution of family history among patients with psoriasis.

The problem of family history of psoriasis is a subject of debate, with great variability of results (Tabl. II), ranging from 7% to 60-70% depending on variable factors.

Our study demonstrated an association of family history of 29.53%: 16.18% -first degree relatives; 9.30% second degree relatives; 2.91% third degree and 1.13% fourth degree relatives.

Study	Family history of psoriasis
Naldi et al [1] 1991	18.8% in parents and 3.25% in siblings
Naldi et al [2] 2001	7% in guttate psoriasis
Bahcetepe et al [3] 2013	56%
Na SJ et al [4] 2013	26%
Brunasso et al [5] 2013	28% in palmo-plantar plaque psoriasis
Clabaut et al [6] 2010	36-64%
Mahé E et al [7] 2004	25% in children with one parent diagnosed with psoriasis and 60-70% if both parents have psoriasis

Table II. Results of the study.

REFERENCES

- Naldi L, Parazzini F, Brevi A, Peserico A, Veller Fornasa C, Grosso G, et al. Family history, smoking habits, alcohol consumption and risk of psoriasis Br J Dermatol. 1992;127:212-7.
- Naldi L, Peli L, Parazzini F, Carrel CF. Family history of psoriasis, stressful life events, and recent infectious disease are risk factors for a first episode of acute guttate psoriasis: results of a case-control study. J Am Acad Dermatol. 2001;44:433-8.
- Bahcetepe N, Kutlubay Z, Yilmaz E, Tuzun Y, Eren B. The role of HLA antigens in the aetiology of psoriasis. Med Glas (Zenica). 2013;10:339-42.

- Na SJ, Jo SJ, Youn JI. Clinical study on psoriasis patients for past 30 years (1982-2012) in Seoul National University Hospital Psoriasis Clinic. J Dermatol. 2013;40:731-5.
- Brunasso AM, Puntoni M, Aberer W, Delfino C, Fancelli L, Massone C. Clinical and epidemiological comparison of patients affected by palmoplantar plaque psoriasis and palmoplantar pustulosis: a case series study. Br J Dermatol. 2013;168:1243-51.
- Clabaut A, Viseux V: Société Française de Dermatologie Pédiatrique. [Management of childhood psoriasis]. Ann Dermatol. Venereol. 2010;137:408-15.
- Mahé E. Psoriasis de l'enfant. J Pediatr Pueric. 2004;17:380-6.